

# ISAT-200 System

## SYSTEM BENEFITS

- Global flight following, voice, text, and data transfer
- Easily integrates with other on board equipment
- Increased data transparency
- Automatic – no pilot input required

## HARDWARE FEATURES

- Single TSO'd GPS and Iridium Combo Antenna
- Internal battery to facilitate emergency mode and capture actual aircraft engine off events
- Reduced size and improved functionality
- USB port and SD card reader
- Premium packet structure
- Field replaceable battery
- Digital voice

## COCKPIT INTERFACE (DIALER AND DISPLAY)

- Send/receive preconfigured, editable field or free form text messages
- Send/receive satellite phone calls
- Emergency mode/mayday switch
- Tag flight number or pilot log to each position report (premium data packet)

## VIEWING SOFTWARE

- Manage and track duty hours
- Tag data with airframe ID
- Independent data audit trail
- Hardware management console to remotely activate and configure units

## ISAT-100 TO ISAT-200 UPGRADES

The ISAT-100 to ISAT-200 upgrade is made easy by using the wiring conversion kit and mounting plate available through SkyTrac Systems.



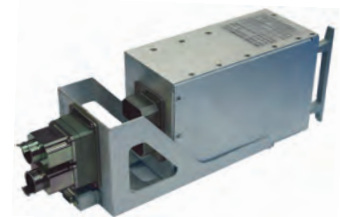
ISAT-200

## NEXT GENERATION FLIGHT FOLLOWING AND SATCOM

The ISAT-200 system is SkyTrac's next generation installed full featured flight following and SatCom system. This leading edge system goes beyond tracking, voice, and text with countless new feature sets and functionalities.



Dual GPS/Iridium Antenna



ISAT 200 (back view in tray)



CDP-300 + DVI-300



ISAT-200 System

**ISAT-200 – Transceiver**

IRIDIUM Services	SBD, Dial-Up data, SMS, DAV and RUDICS
Operating Frequency	1616 MHz to 1626.5 MHz
Power Requirements	10 Vdc to 32 Vdc
Power Consumption	0.5 A typical, 1.5 A in transmission
Audio Output	150 mWV into 600 or 300 Ohms
Microphone Input	0.007 Vrms – 1.4 Vrms @ 1000 Ohms Impedance
Operating Temperature	-40°C to +70°C
Dimensions	H x W x D = 5.25"x3.91"x12.1" (133.4mmx99.3 mm x 307.3mm)
Weight	4.8 lbs (2.18 kg) including Tray
Mounting	Tray (with ARINC 404 or Blind Mate Connectors)
Cooling	Normal air circulation
Environmental Tests	D0160 Category F

**Dual Antenna**

GPS Antenna	Active L1
Iridium Antenna	Passive
Radome	Low profile molded
Power Handling	1 W (GPS) ; 30 W (Iridium)
Dimensions	H x W x D = 0.72"x2.2"x5" (18.3mm x 56mm x 127.7 mm)
Weight	0.5 lbs (0.226 kg)

**CDP-300 Specifications**

Power Requirements	10 - 32.2 Vdc Aircraft Power per Mil-Std-704 D
Power Consumption	80 mA @ 28 Vdc
Operating Temperature	-40°C to +70°C
Dimensions	H x W x D = 1.8"x5.75"x3.2" (46.7mm x 146mm x 80.5mm)
Weight	0.73 lbs (0.33 kg)
Mounting	DZUS rails using 4 1/4 Turn Studs
Cooling	Normal air circulation
Environmental Tests	D0160 Category E

**DVI-300 Specifications**

Power Requirements	20.5 - 32.2 Vdc Aircraft Power per Mil-Std-704 D
Power Consumption	50 mA @ 28 Vdc
Operating Temperature	-40°C to +70°C
Dimensions	H x W x D = 1.12"x5.75"x3.4" (28.4mm x 146mm x 86.4mm)
Weight	0.6 lbs (0.27 kg)
Mounting	DZUS rails using 4 1/4 Turn Studs
Cooling	Normal air circulation
Environmental Tests	D0160 Category E